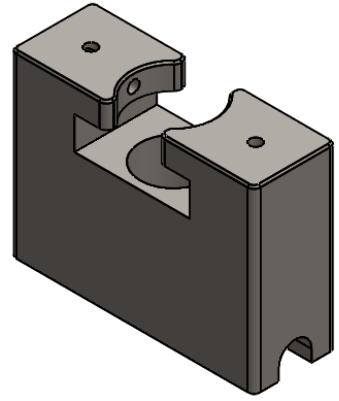


REVISIONS		
REV.	DESCRIPTION	DATE
0	INITIAL RELEASE FOR PRODUCTION	2/12/2018
1	ADDED T-SLOT CUT TO AVOID ACCESS HEAT BUILDUP IN THE STEEL, 0.380 DIA WAS 0.375; CHANGED FOR BLENDING PURPOSES	4/24/2018
2	CHANGED 0.585 DIA TO 0.606 TO FIT THERMOMETER; ADJUSTED FILLETS	4/5/2019



⊕ DIMENSIONS ARE IN INCHES UNLESS OTHERWISE SPECIFIED

DEFAULT TOLERANCES:
 .X ± 0.025
 .XX ± 0.010
 .XXX ± 0.005
 .XXXX ± 0.001
 ANGULAR ± 1.0°
 FINISH 32AA OR BETTER

NO BURRS ALLOWED (0.015 C/R MAX ON EDGE BREAKS)

INTERPRET DRAWING PER ASME Y14.5-2009

THIS DOCUMENT AND THE DATA DISCLOSED HEREIN OR HEREWITH IS NOT TO BE REPRODUCED, USED, OR DISCLOSED IN WHOLE OR IN PART TO ANYONE WITHOUT THE WRITTEN CONSENT OF: CONEMOUNT



MATERIAL: AISI 1018 STEEL		
DRAWN:	RHAMILTON	4/5/2019
DESIGNED:	BSUMNER	1/11/2018
CHECKED:		

DESCRIPTION: THERMOMETER WEIGHT, CONEMOUNT		
SIZE	PART NO.	REV.
B	Thermo Weight	2
SCALE: 3:2	APPROX. WEIGHT: 0.32 LBS	SHEET 1 OF 1